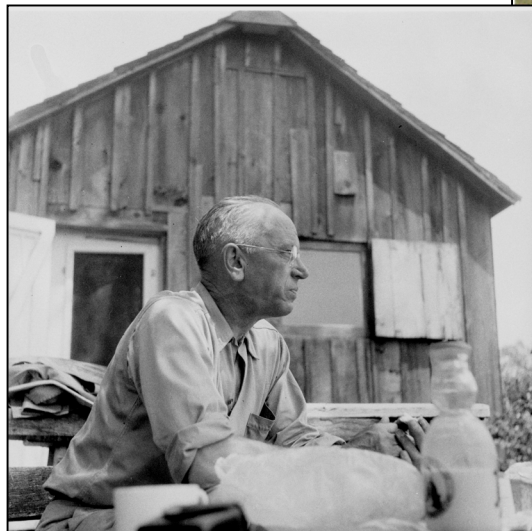


# What would **ALDO LEOPOLD**



fortenberry.house.gov

Courtesy of the Aldo Leopold Foundation Archives



## *think about* **CORN ETHANOL?**

A Speaker Series at the UW-Madison

**Thursdays @ 3:30**, September 28 - October 26, 2006  
**2241 Chamberlin Hall**, 1150 University Ave.

Aldo Leopold spoke convincingly of the need for a **Land Ethic**. He was also interested in how the land serves people. One such service, **biomass-based energy** production is receiving increasing attention. Public policy is encouraging agriculturally produced energy; at the same time, people are identifying a variety of **economic, ethical** and **ecological implications**. The UW-Madison **Agroecology Program** and **College of Engineering** present a seminar series exploring many sides of this issue, including what light Aldo Leopold's land ethic might shed on this **new agricultural endeavor**. Visit [www.agroecology.wisc.edu](http://www.agroecology.wisc.edu).

**Public welcome!**

- Sept. 28 Clearing the Air with Ethanol & Biofuels: Saving Lives, Jobs & Money.**  
Brett Hulsey, Environmental Consultant
- Oct. 5 The Environmental Impacts of the Corn-Ethanol Cycle.**  
Tad Patzek, UC-Berkeley
- Oct. 12 The Bioeconomy: Potential Impacts on Soil & Water Resources.**  
Rick Cruse, Iowa State University
- Oct. 19 An Air Quality Perspective on Corn Ethanol and other Biofuels.**  
Jamie Schauer, UW-Madison
- Oct. 26 Ethics, Economics, Ecology, Engineering, Ethanol...and Aldo.**  
Curt Meine, Conservation Biologist and Leopold biographer



Funding provided by the  
Bradshaw-Knight Foundation  
[www.bkfund.org](http://www.bkfund.org)

Cosponsored by the UW Center for  
Integrated Agricultural Systems and the  
FH King Students of Sustainable Agriculture.



COLLEGE OF **ENGINEERING**  
UNIVERSITY OF **WISCONSIN-MADISON**



COLLEGE OF  
**AGRICULTURAL & LIFE SCIENCES**  
University of Wisconsin-Madison